

Fullstream Energy Holdings LLC
 417 Thorn Street, Suite 301
 Sewickley, PA 15143
 Office: (412) 528-0404
 Website: www.fullstreameh.com



WHO IS FULLSTREAM ENERGY

Fullstream Energy is focused on partnering with producers in world class resource plays to provide safe, reliable and cost effective midstream solutions, using creative and flexible commercial arrangements. Fullstream Energy currently operates a 24” gas pipeline in Harrison County West Virginia.

WHAT ARE THE SIGNS OF A NATURAL GAS PIPELINE LEAK?

- Blowing or hissing sound
- Dust blowing from a hole in the ground
- Continuous bubbling in wet or flooded areas
- Gaseous or hydrocarbon odor
- Dead or discolored vegetation in a green area
- Flames, if a leak has ignited

WHAT SHOULD I DO IF I SUSPECT A PIPELINE LEAK?

Your personal safety should be your first concern:

- Evacuate the area and prevent anyone from entering
- Abandon any equipment being used near the area
- Avoid any open flames
- Avoid introducing any sources of ignition to the area (such as cell phones, pagers, 2-way radios)
- Do not start/turn off motor vehicles/ electrical equipment
- Call 911 or contact local fire or law enforcement
- Notify the pipeline company
- Do not attempt to extinguish a natural gas fire
- Do not attempt to operate any pipeline valves

PIPELINE SAFETY

System failures occur infrequently along the nation’s network of interstate natural gas pipeline facilities, and many of these are caused by damage from others digging near the pipeline. We watch for unauthorized digging, but we request your help to notify us.

ALWAYS CALL 811 BEFORE YOU DIG!

PIPELINE LOCATION AND MARKERS

Pipeline markers are used to indicate the approximate location of a natural gas pipeline and to provide contact information. Aerial patrol planes also use the markers to identify the pipeline route. Markers should never be removed or relocated by anyone other than a pipeline operator.

You can also find out where other companies’ pipelines are in your area by going to the National Pipeline Mapping System website at www.npms.phmsa.dot.gov.

**EMERGENCY CONTACT:
1-888-257-5574**

PRODUCTS/ DOT GUIDEBOOK ID#/ GUIDE#:		
Natural Gas	1971	115

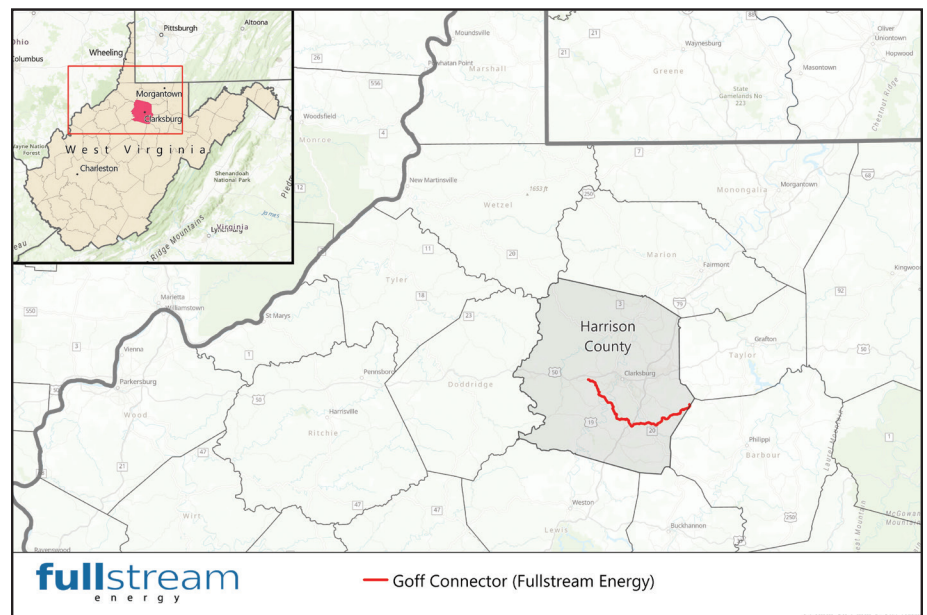
**WEST VIRGINIA
COUNTIES OF OPERATION:**

Harrison

Changes may occur. Contact the operator to discuss their pipeline systems and areas of operation.

EMERGENCY RESPONSE PLANS

An Emergency Response Plan is developed for each pipeline facility to contain, control and mitigate the various types of emergency conditions/ situations that could occur at one of our facilities. For more information regarding Fullstream Energy’s emergency response plans and procedures, contact us at 412-528-0404.



Pipeline Diameter: 24”